



2010 Air Quality Progress Report

In fulfillment of Part IV of the Environment Act 1995
Local Air Quality Management

April 2010

Local Authority Officer	Victoria Clarke
--------------------------------	-----------------

Department	Environmental Health
Address	Melton Borough Council Council Offices Nottingham Road Melton Mowbray LE13 0UL
Telephone	01664 502408
e-mail	vclarke@melton.gov.uk

Report Reference number	PR6/MBC/10
Date	30 April 2010

Executive Summary

The only pollutant which has been determined to be of significance in the Borough of Melton throughout the air quality review and assessment process since the year 2000 is **nitrogen dioxide**.

As the result of modelling in 2001 an air quality management area (AQMA) was declared. However the monitoring that has been carried out since that date has demonstrated that the model had over predicted.

In 2005 the AQMA was revoked.

Nitrogen dioxide continues to be monitored by the use of diffusion tubes and the results continue to be within the annual mean concentrations. None of the pollutants require a detailed assessment.

Table of contents

1	Introduction	6
1.1	Description of Local Authority Area	6
1.2	Purpose of Progress Report	7
1.3	Air Quality Objectives	7
1.4	Summary of Previous Review and Assessments	8
2	New Monitoring Data	9
2.1	Summary of Monitoring Undertaken	9
2.2	Comparison of Monitoring Results with Air Quality Objectives	12
3	New Local Developments	19
3.1	Road Traffic Sources	19
3.2	Other Transport Sources	20
3.3	Industrial Sources	21
3.4	Commercial and Domestic Sources	22
3.5	New Developments with Fugitive or Uncontrolled Sources	23
4	Local / Regional Air Quality Strategy	24
5	Planning Applications	25
6	Air Quality Planning Policies	26
7	Local Transport Plans and Strategies	27
8	Conclusions and Proposed Actions	29
8.1	Conclusions from New Monitoring Data	29
8.2	Conclusions relating to New Local Developments	29
8.3	Proposed Actions	29
11	References	30

Appendices

- Appendix 1 Full dataset of monthly average diffusion tube concentrations
Appendix 2 Environment Agency Permits

List of Tables

- Table 1 Air Quality Objectives included in Regulations for the purpose of Local Air Quality Management in England
Table 2.1 Details of Non- Automatic Monitoring Sites
Table 2.2a Results of Nitrogen Dioxide Diffusion Tubes for 2009
Table 2.2b Results of Nitrogen Dioxide Diffusion Tubes since 2006

List of Figures

- Figure 1: Location of Melton Borough Council
Figure 2: Former Air Quality Management Area in the Borough of Melton
Figure 3.1: Map of Non-Automatic Monitoring Sites in Melton Town
Figure 3.2: Map of Non-Automatic Monitoring Sites in Borough of Melton
Figure 4: Nitrogen Dioxide monitoring results in the town of Melton Mowbray since 2003
Figure 5: Nitrogen Dioxide monitoring results in the rural Borough of Melton since 2003

1 Introduction

1.1 Description of Local Authority Area



Figure 1: Location of Melton Borough Council

GEOGRAPHIC MAKE UP OF DISTRICT

Melton is a rural district in Leicestershire with an area of approximately 48,000 hectares. The population is about 48,300 of which just over 25,000 live in the town of Melton Mowbray. Melton Mowbray is 18 miles from Nottingham, 15 miles from Leicester and approximately 20 miles from East Midlands Airport. There are more than 60 villages and 25 parish councils.

POLLUTION SOURCES

The main source of concern within the Borough of Melton is traffic.

No new industrial processes (A1, A2 or B) commenced operation or changed significantly during the period 1 January 2009 to 31 December 2009.

There are thirteen A1 processes approved by the Environment Agency (see Appendix B).

There is one A2 process; the Saint Gobain foundry at Asfordby which does not cause any significant problems.

There are twenty Part B processes, of which there are 5 petrol vapour recovery (PVR) and 4 waste oil burners (WOB).

LeFarge Quarry at Brooksby. The quarry commenced operation for gravel extraction and grading in October 2006. Melton Borough Council is now working in partnership with our neighbour Charnwood Borough Council (CBC) as they have a quarry in their district operated by the same company. The quarry in Charnwood is larger and includes blasting and granite crushing operations.

1.2 Purpose of Progress Report

This report fulfils the requirements of the Local Air Quality Management process as set out in Part IV of the Environment Act (1995), the Air Quality Strategy for England, Scotland, Wales and Northern Ireland 2007 and the relevant Policy and Technical Guidance documents. The LAQM process places an obligation on all local authorities to regularly review and assess air quality in their areas, and to determine whether or not the air quality objectives are likely to be achieved. Where exceedences are considered likely, the local authority must then declare an Air Quality Management Area (AQMA) and prepare an Air Quality Action Plan (AQAP) setting out the measures it intends to put in place in pursuit of the objectives.

1.3 Air Quality Objectives

The air quality objectives applicable to LAQM in England are set out in the Air Quality (England) Regulations 2000 (SI 928), The Air Quality (England) (Amendment) Regulations 2002 (SI 3043), and are shown in Table 1.1. This table shows the objectives in units of microgrammes per cubic metre $\mu\text{g}/\text{m}^3$ (milligrammes per cubic metre, mg/m^3 for carbon monoxide) with the number of exceedences in each year that are permitted (where applicable).

Table 1 Air Quality Objectives included in Regulations for the purpose of Local Air Quality Management in England.

Pollutant	Air Quality Objective		Date to be achieved by
	Concentration	Measured as	
Benzene	16.25 $\mu\text{g}/\text{m}^3$	Running annual mean	31.12.2003
	5.00 $\mu\text{g}/\text{m}^3$	Running annual mean	31.12.2010
1,3-Butadiene	2.25 $\mu\text{g}/\text{m}^3$	Running annual mean	31.12.2003
Carbon monoxide	10.0 mg/m^3	Running 8-hour mean	31.12.2003
Lead	0.5 $\mu\text{g}/\text{m}^3$	Annual mean	31.12.2004
	0.25 $\mu\text{g}/\text{m}^3$	Annual mean	31.12.2008
Nitrogen dioxide	200 $\mu\text{g}/\text{m}^3$ not to be exceeded more than 18 times a year	1-hour mean	31.12.2005
	40 $\mu\text{g}/\text{m}^3$	Annual mean	31.12.2005
Particles (PM ₁₀) (gravimetric)	50 $\mu\text{g}/\text{m}^3$, not to be exceeded more than 35 times a year	24-hour mean	31.12.2004
	40 $\mu\text{g}/\text{m}^3$	Annual mean	31.12.2004
Sulphur dioxide	350 $\mu\text{g}/\text{m}^3$, not to be exceeded more than 24 times a year	1-hour mean	31.12.2004
	125 $\mu\text{g}/\text{m}^3$, not to be exceeded more than 3 times a year	24-hour mean	31.12.2004
	266 $\mu\text{g}/\text{m}^3$, not to be exceeded more than 35 times a year	15-minute mean	31.12.2005

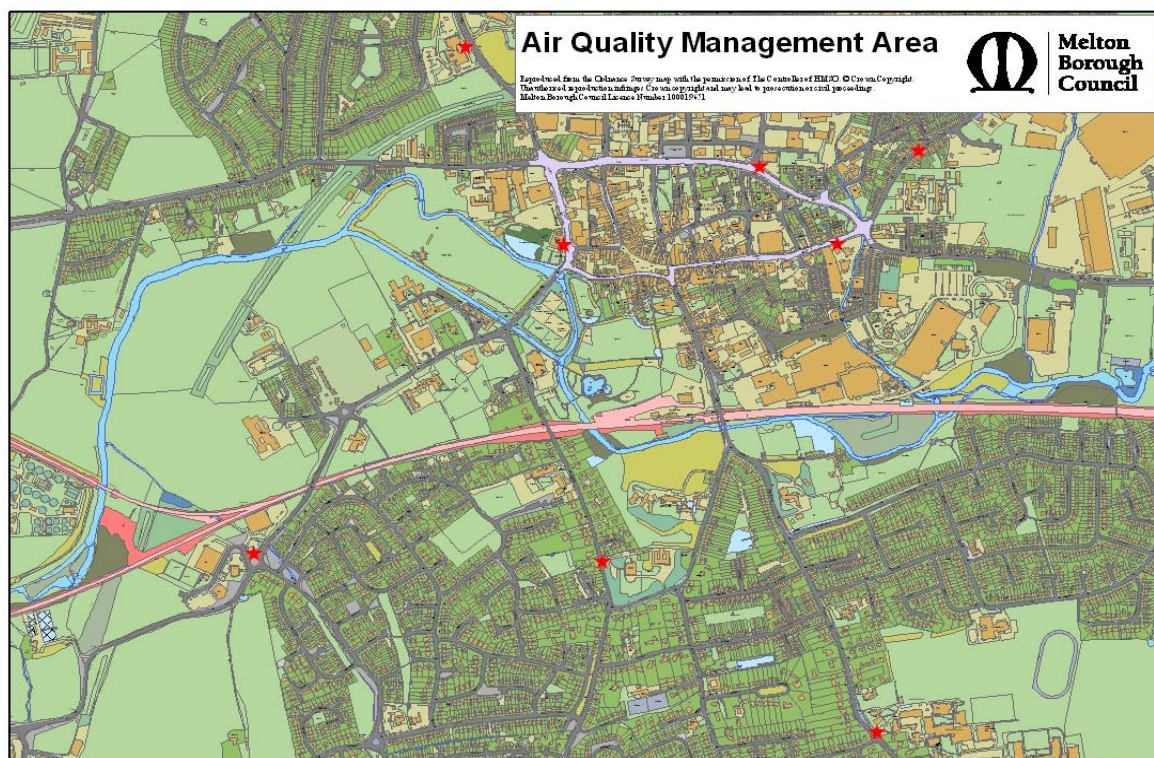
1.4 Summary of Previous Review and Assessments

Since 2000 the review of air quality has been completed to the satisfaction of DEFRA. Many of the reports can be viewed from the following link;

http://www.melton.gov.uk/environment_and_planning/environmental_health/pollution/air_pollution/air_quality_review.aspx

- 2000 – Review & Assessment
- 2001 – **AQMA declared**
- 2002 – Stage 4 Assessment
- 2003 – Updating & Screening Assessment
- 2004 – Progress Report
- 2005 – Progress Report - **revoking AQMA**
- 2006 - Updating & Screening Assessment
- 2007 - Progress Report
- 2008 - Progress Report
- 2009 - Updating & Screening Assessment

The only pollutant of interest to date has been NO₂. In 2001 an air quality management area (AQMA) was declared in and around the town centre (marked in mauve on Figure 2 below).



Please note: the red stars indicate the positions of a number of NO_x tubes.
Figure 2: Former Air Quality Management Area in the Borough of Melton

The AQMA was declared based on modelling of predicted NO₂, however the monitoring proved that the modelling had over predicted and the AQMA was revoked in 2005. As this report will go on to demonstrate, the NO₂ levels remain within the air quality objectives.

2 New Monitoring Data

2.1 Summary of Monitoring Undertaken

2.1.1 Automatic Monitoring Sites

Melton Borough Council does not have any automatic monitoring sites

2.1.2 Details of Non- Automatic Monitoring Sites

The following table provides details of each monitoring site in the Borough of Melton

Table 2.1 Details of Non- Automatic Monitoring Sites (colour coding relates to Fig 3 below)

Site Name	Site Type	OS Grid Ref	Pollutants Monitored	In AQMA?	Relevant Exposure? (Y/N with distance (m) to relevant exposure)	Distance to kerb of nearest road (N/A if not applicable)	Worst-case Location ?
			NO ₂	N	Y (1m)	3m	Y
Wilton Road	Urban background	X 475029 Y 319164	NO ₂	N	15M	2M	Y
Leicester Road	Urban background	X 474290 Y 318404	NO ₂	N	50M	1.5M	Y
Thorpe End	Urban background	X 475637 Y 319167	NO ₂	N	1M	1.5M	Y
Thorpe Road	Urban background	X 475843 Y 319401	NO ₂	N	3M	2M	Y
Norman Way	Urban background	X 475583 Y 319310	NO ₂	N	14M	2M	Y
Burton Road	Urban background	X 475782 Y 317922	NO ₂	N	19M	2M	Y
Nottingham Road	Urban background	X 474621 Y 320330	NO ₂	N	18M	2M	Y
Dalby Road	Urban background	X 475138 Y 318299	NO ₂	N	20M	1.5M	Y
Melton Road, Asfordby Hill	Rural	X 472471 Y 319224	NO ₂	N	6M	2M	Y
Leicester Road, Kirby Bellars	Rural	X 471477 Y 317669	NO ₂	N	25M	2M	Y
Main Road, Croxton Kerrial	Rural	X 483590 Y 329125	NO ₂	N	11M	3M	Y
Dalby Rd/Wilton Road	Urban background	X 474901 Y 318949	NO ₂	N	50M	2M	Y
Leicester Street	Urban background	X 475048 Y 319109	NO ₂	N	16M	1M	Y

2.1.3 Quality Assurance/Quality Control for Diffusion Tubes

- The laboratory supplying and analysing the tubes is ESG (Environmental Scientifics Group (formally Bureau Veritas)).

- Since January 2009, ESG have used 20% (triethanolamine) TEA in water preparation method to fit in with the DEFRA harmonised methods.
- There has not been a co-location study.
- The bias adjustment factor being applied to the annual means from the diffusion tubes is 0.77. This came from the Review and Assessment website <http://www.uwe.ac.uk/aqm/review/R&Asupport/diffusiontube310310.xls>
- ESG had good results of laboratory precision and the z scores of < 1 for the WASP scheme analysis, equates to category 1 (good).

Figure 3.1 Map of Non-Automatic Monitoring Sites in Melton Town Centre

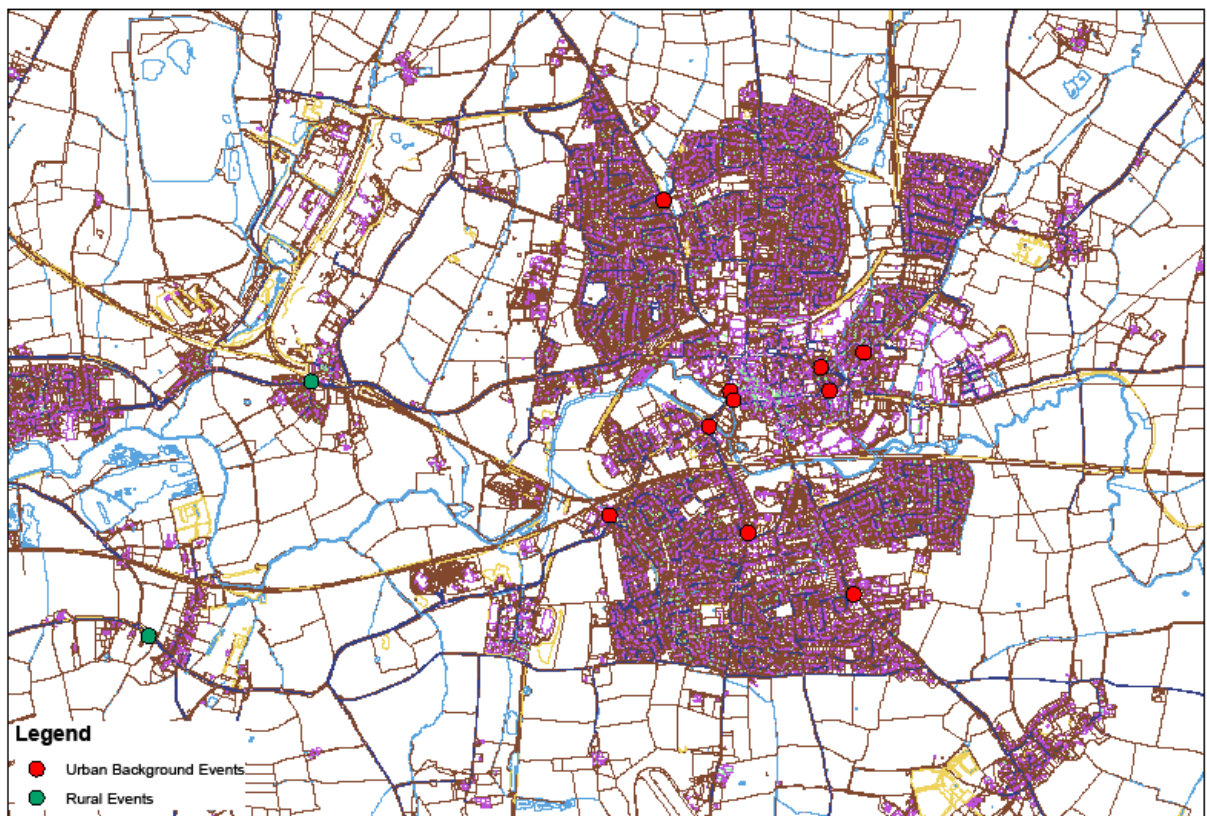


Figure 3.2 Map of Non-Automatic Monitoring Sites in the Borough of Melton
(red indicate urban background sites and green indicate rural monitoring sites)



Comparison of Monitoring Results with Air Quality Objectives

This section provides additional details of the pollutants monitored in the Borough of Melton and an assessment is made of whether a detailed assessment is required.

2.1.3 NITROGEN DIOXIDE

The measured annual mean concentration was not greater than 40 µg/m³ at any site analysed in the Borough of Melton. The monitoring site locations are representative of relevant public exposure.

2.2.2 Diffusion Tube Monitoring Data

The following tables demonstrate the 2008 annual mean concentrations for each of the sites monitored, the adjusted results for the past 3 years and trend analysis over 7 years.

Table 2.2a Results of Nitrogen Dioxide Diffusion Tubes for 2009

Site ID	Location	Within AQMA?	Data Capture 2009 %	Annual mean concentrations
				2009 (µg/m ³) Adjusted for bias
				Bias Adjustment 0.77
1	Wilton Road	N	100	30.3
2	Leicester Road	N	100	28.1
3	Sherrard St	N	100	36.6
4	Thorpe Road	N	100	38.4
5	Norman Way	N	83	31.5
6	Burton Road	N	92	25.5
7	Nottingham Road	N	92	27.9
8	Dalby Road	N	83	26.5
9	Asfordby Hill	N	92	35.3
10	Kirby Bellars	N	100	21.9
11	Croxtton Kerrial	N	100	22.6
12	Dalby Road	N	100	29
13	Leicester Street	N	92	31.7

The figure in red represents where the period of valid data is less than 90% of a full year

Trends in Annual Mean Nitrogen Dioxide Concentration Measured at Diffusion Tube Monitoring Sites.

As can be seen from the table and corresponding chart below

the annual average for all sites remains below 40µg/m³.
which is the national annual mean NO₂ objective

Table 2.2b Results of Nitrogen Dioxide Diffusion Tubes since 2006

Site ID	Location	Within AQMA?	Annual mean concentrations ($\mu\text{g}/\text{m}^3$) Adjusted for bias			
			2006 *	2007 *	2008	2009
1	Wilton Road	N	30	33	30	30
2	Leicester Road	N	27	27	28	28
3	Sherrard St	N	33	40	34	37
4	Thorpe Road	N	33	33	38	38
5	Norman Way	N	27	33	31*	32
6	Burton Road	N	23	23	23	26
7	Nottingham Road	N	25	32	25	28
8	Dalby Road	N	23	27	23	27
9	Asfordby Hill	N	28	33	31	35
10	Kirby Bellars	N	22	22	21	22
11	Croxtan Kerrial	N	22	22	22	23
12	Dalby Road	N	30	29	29	29
13	Leicester Street	N	22	33	32	32

The figures in red represent where the period of valid data is less than 90% of a full year

The slight rise in 2007 can mainly be attributed to major roadworks in Melton Mowbray for much of the year. The rise in 2008 for Thorpe Road is as a result of follow up roadworks on the Thorpe Road and Thorpe End junction.

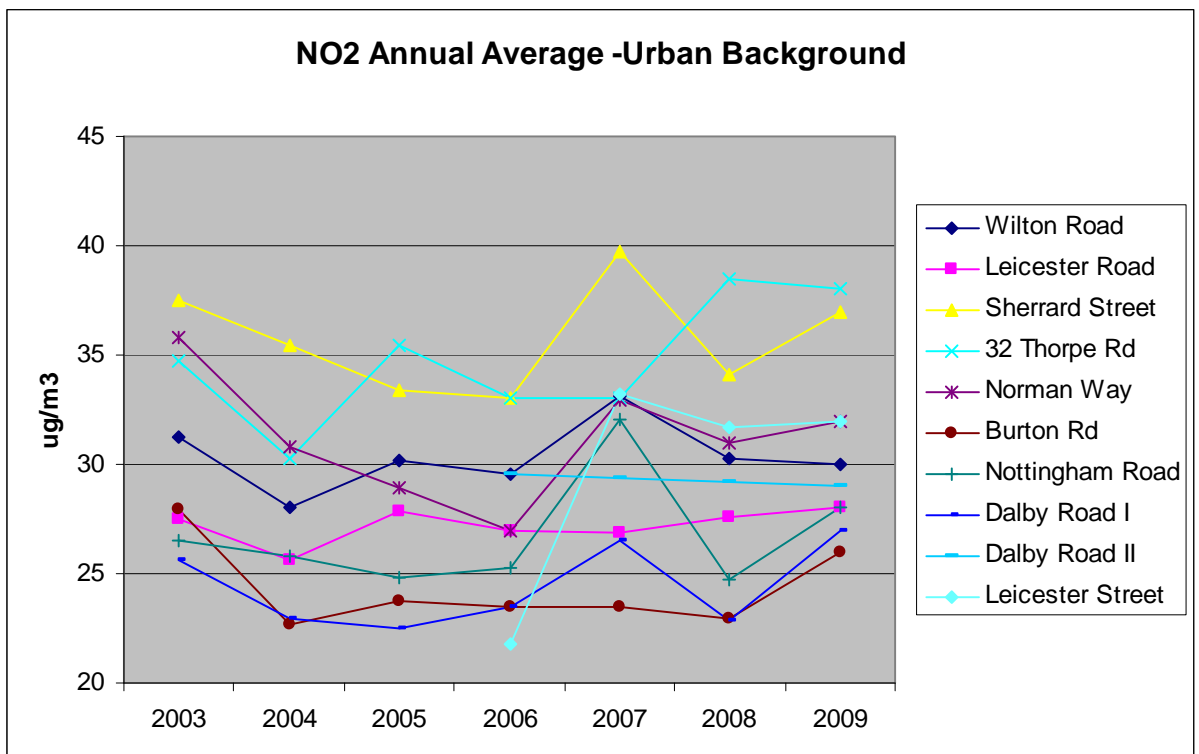


Figure 4: Nitrogen Dioxide monitoring results in the town of Melton Mowbray since 2003

The table below continues to show that NO₂ annual mean concentrations in the rural area of the Borough are satisfactory.

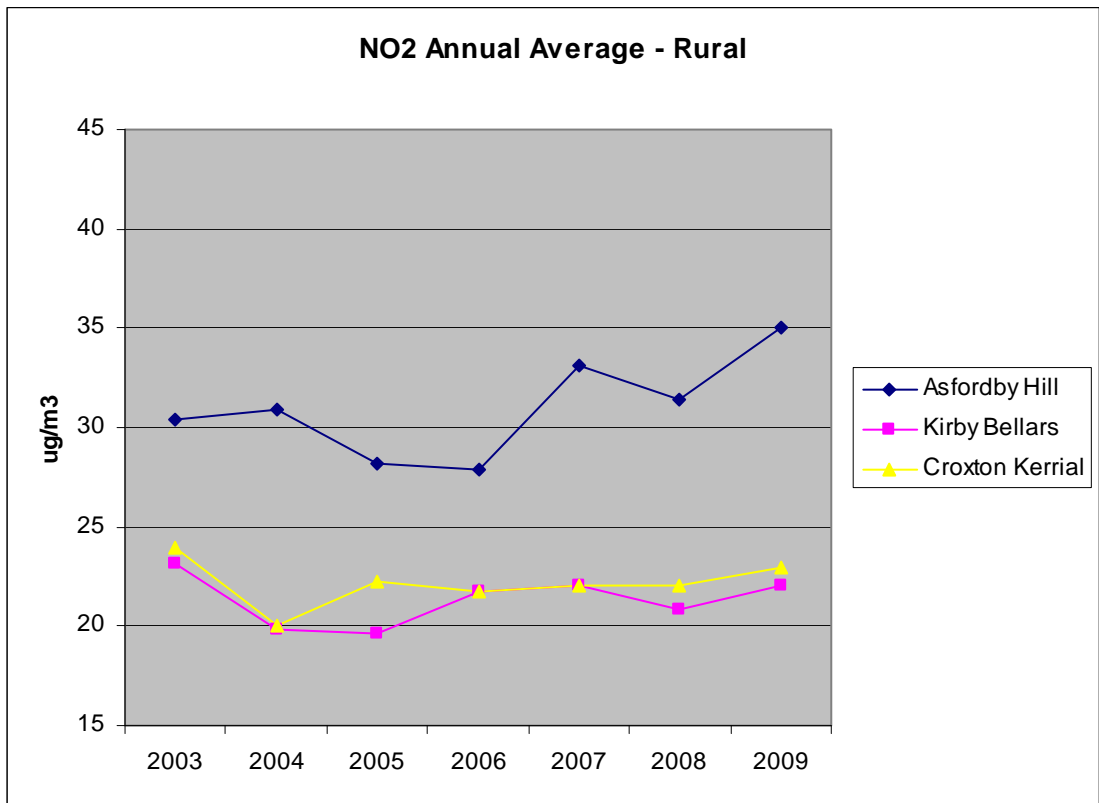


Figure 5: Nitrogen Dioxide monitoring results in the rural Borough of Melton since 2003

Melton Borough Council will continue to monitor nitrogen dioxide by using diffusion tubes in 2010. It is perceived that with no significant changes expected in the next year, the results will remain stable and below the national annual mean NO₂ objective.

2.1.4 PM₁₀

This authority is not currently monitoring PM₁₀.

There have been no significant changes with regard to PM₁₀ emissions in this authority since the original review and assessment in 2000 and as such a **Detailed Assessment will not be required**

2.1.5 SULPHUR DIOXIDE

This authority is not currently monitoring SO₂.

There are no new industrial processes of relevance for SO₂ in the authority. There have been no significant changes with regards to SO₂ emissions in this authority since the original review and assessment in 2000 and as such a **Detailed Assessment will not be required.**

2.1.6 BENZENE

This authority is not currently monitoring benzene.

There have been no significant changes with regards to benzene emissions in this authority since the original review and assessment in 2000 and as such a **Detailed Assessment will not be required.**

2.1.7 OTHER POLLUTANTS MONITORED

There are no other pollutants monitored by Melton Borough Council, however there is a national ozone monitoring station at Bottesford, within the Borough.

Details can be seen at 2.2.7 below.

2.2.7 Bottesford



The monitoring station is within a self-contained, air-conditioned housing located off the A52 Nottingham to Grantham road in a rural setting surrounded by farm land. The nearest main road lies at a distance of approximately 1 km. The manifold inlet is approximately 5 metres from the nearest rural road and approximately 3 metres above ground level. The surrounding area is open.

Site Address:

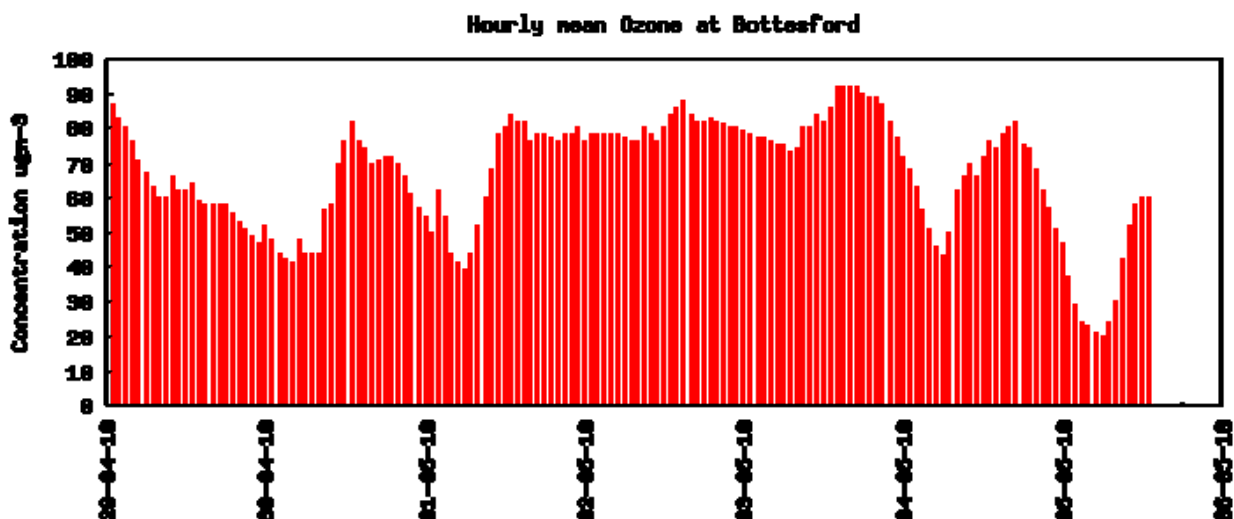
Barkestone Lane, Bottesford, Leicestershire

Easting and Northing: 479770, 337641

Site Type: Suburban

Pollutants Measured:

Pollutant	Start Date	End Date
Ozone	01/10/1977	-



The results fall into the low band.

Band	Index	Ozone	
		Running 8 hourly or hourly mean*	
		µgm ⁻³	ppb
Low			
	1	0-33	0-16
	2	34-65	17-32
	3	66-99	33-49
Moderate			
	4	100-125	50-62
	5	126-153	63-76
	6	154-179	77-89
High			
	7	180-239	90-119
	8	240-299	120-149
	9	300-359	150-179
Very High			
	10	360 or more	180 or more

The above information is from DEFRA and can be seen at,
<http://aurn.defra.gov.uk/stations/viewStation.php?id=14>
http://www.airquality.co.uk/detailed_zone.php?zone_id=12

2.1.8 Summary of Compliance with AQS Objectives

Melton Borough Council has examined the results from monitoring in the Borough. Concentrations are all below the objectives, therefore there is no need to proceed to a Detailed Assessment.

3 New Local Developments

3.1 Road Traffic Sources

3.2 Narrow Congested Streets with Residential Properties Close to the Kerb

Melton Borough Council confirms that there are no new/newly identified congested streets with a flow above 5,000 vehicles per day and residential properties close to the kerb, that have not been adequately considered in previous rounds of Review and Assessment.

3.3 Busy Streets Where People May Spend 1-hour or More Close to Traffic

Melton Borough Council confirms that there are no new/newly identified busy streets where people may spend 1 hour or more close to traffic.

3.4 Roads with a High Flow of Buses and/or HGVs.

Melton Borough Council confirms that there are no new/newly identified roads with high flows of buses/HGVs.

3.5 Junctions

Melton Borough Council confirms that there are no new/newly identified busy junctions/busy roads.

3.6 New Roads Constructed or Proposed Since the Last Round of Review and Assessment

Melton Borough Council confirms that there are no new/proposed roads.

3.7 Roads with Significantly Changed Traffic Flows

Melton Borough Council confirms that there are no new/newly identified roads with significantly changed traffic flows.

3.8 Bus and Coach Stations

Melton Borough Council confirms that there are no relevant bus stations in the Local Authority area.

3.9 Other Transport Sources

3.10 Airports

Melton Borough Council confirms that there are no airports in the Local Authority area.

3.11 Railways (Diesel and Steam Trains)

3.11.1 Stationary Trains

Melton Borough Council confirms that there are no locations where diesel or steam trains are regularly stationary for periods of 15 minutes or more, with potential for relevant exposure within 15m.

3.11.2 Moving Trains

Melton Borough Council confirms that there are no locations with a large number of movements of diesel locomotives, and potential long-term relevant exposure within 30m.

3.12 Ports (Shipping)

Melton Borough Council confirms that there are no ports or shipping that meet the specified criteria within the Local Authority area.

3.13 Industrial Sources

3.14 Industrial Installations

3.14.1 New or Proposed Installations for which an Air Quality Assessment has been Carried Out

Melton Borough Council confirms that there are no new or proposed industrial installations for which planning approval has been granted within its area or nearby in a neighbouring authority.

3.14.2 Existing Installations where Emissions have Increased Substantially or New Relevant Exposure has been Introduced

Melton Borough Council confirms that there are no industrial installations with substantially increased emissions or new relevant exposure in their vicinity within its area or nearby in a neighbouring authority.

3.14.3 New or Significantly Changed Installations with No Previous Air Quality Assessment

Melton Borough Council confirms that there are no new or proposed industrial installations for which planning approval has been granted within its area or nearby in a neighbouring authority.

3.15 Major Fuel (Petrol) Storage Depots

There are no major fuel (petrol) storage depots within Melton Borough Council area.

3.16 Petrol Stations

Melton Borough Council confirms that there are no petrol stations meeting the specified criteria.

3.17 Poultry Farms

Melton Borough Council confirms that there are no poultry farms meeting the specified criteria.

Shoby Poultry of Lodge Farm, Six Hills Lane, Old Dalby LE14 3NB is about to be permitted by the Environment Agency for 181,000 birds with mechanical ventilation. It is not a turkey unit.

3.18 Commercial and Domestic Sources

3.19 Biomass Combustion – Individual Installations

Melton Borough Council confirms that there are no biomass combustion plants in the Local Authority area.

3.20 Biomass Combustion – Combined Impacts

Melton Borough Council confirms that there are no biomass combustion plants in the Local Authority area.

3.21 Domestic Solid-Fuel Burning

Melton Borough Council confirms that there are no areas of significant domestic fuel use in the Local Authority area.

3.22 New Developments with Fugitive or Uncontrolled Sources

Melton Borough Council confirms that there are no potential sources of fugitive particulate matter emissions in the Local Authority area from

- Landfill sites.
- Quarries.
- Unmade haulage roads on industrial sites.
- Waste transfer stations etc.
- Other potential sources of fugitive particulate emissions.

4 Local / Regional Air Quality Strategy

Melton Borough Council confirms it is currently not considering drawing up a local air quality strategy.

5 Planning Applications

Melton Borough Council is planning approval for new Council Offices following a catastrophic fire in May 2008. The new build is to be completed by May 2011.

There is an application in from Sainsbury's on the former site of the Council Offices.

There is a planning application in the re-locate the existing abattoir in Melton Mowbray (which is located opposite the proposed Sainsbury's) so the impact of vehicular movements altering at one may negate the other.

Melton Borough Council will consider the impact that these sites may have on air quality.

6 Air Quality Planning Policies

Air quality was considered in the development of the Core Strategy (Jan 2008) and as there are no Air Quality Management Areas in the Borough at present it was determined not to be a priority.

7 Local Transport Plans and Strategies

Leicester County Council has been in consultation with all the Leicestershire District Councils since the development of the first Local Transport Plan.

Melton Borough Council continue to participate in the consultation.

.

8 Conclusions and Proposed Actions

8.1 Conclusions from New Monitoring Data

The monitoring of nitrogen dioxide that has been carried out in 2009 demonstrates that the levels remain below the national annual mean NO₂ objective. Melton Borough Council will continue to monitor to ensure that levels remain within the objective.

8.2 Conclusions from Assessment of Sources

New Source - Since the last USA the LeFarge Quarry at Brooksby commenced operation for gravel extraction and grading in October 2006. Melton Borough Council is now working in partnership with our neighbour Charnwood Borough Council (CBC) as they have a quarry in their district operated by the same company. The quarry in Charnwood is larger and includes blasting and granite crushing operations. PM10 monitoring at the Charnwood site is in early stages. Should this monitoring produce anything significant which may translate to potential problems at Melton, PM10 monitoring at the Brooksby site may be undertaken.

Existing Sources - There have been no significant changes to any other sources since the previous USA.

The only other potential source of significance in this round could have been Shoby Poultry. However the numbers of birds housed is lower than the threshold for assessment in the USA.

8.3 Proposed Actions

As the air quality objectives identified nationally have not been exceeded in the district since 2003, Melton Borough Council will continue to monitor air quality arising from vehicular transport. This will focus on the continued assessment of nitrogen dioxide using diffusion tubes in and around Melton Mowbray. There will continue to be liaison with colleagues at Leicestershire County Council for traffic data to supplement the report as necessary.

Other potential sources and installations where 'no previous air quality assessment has been required' will be sought.

In 2011 Melton Borough Council will submit a Progress Report.

9 References

DEFRA Technical Guidance (TG09)

Appendices

Appendix A1: Full dataset of monthly average diffusion tube concentrations

SITE	JAN '09	FEB '09	MAR '09	APRIL '09	MAY'09	JUNE '09	JULY'09	AUG '09	SEPT '09	OCT '09	NOV '09	DEC '09	TOTAL	AV	RUNNING AV		Convert to ug/m3 (x 1.91)	Bias 0.77	Capture
Wilton Road	27	23	19	23	19	22	12	13	21	23	19	26	247	21	16	1	39	30.3	100
Leicester Road	27	28	18	17	15	16	16	14	22	19	17	20	229	19	15	2	36	28.1	100
Sherrard Street	31	35	25	24	19	24	20	20	29	24	23	25	299	25	20	3	48	36.6	100
32 Thorpe Rd	33	37	28	22	19	26	22	21	30	23	25	27	313	26	19	4	50	38.4	100
Norman Way	27	31	23	19	13	20	C	16	C	20	22	23	214	21	19	5	41	31.5	83
Burton Rd	22	26	15	15	9	18	19	11	19	17	C	20	191	17	14	6	33	25.5	92
Nottingham Road	26	25	16	18	13	19	16	C	19	18	17	22	209	19	15	7	36	27.9	92
Dalby Road I	21	27	16	13	A	14	12	A	21	16	19	21	180	18	14	8	34	26.5	83
Melton Rd, Asf Hill	28	41	23	18	16	23	C	18	30	22	20	25	264	24	19	9	46	35.3	92
Leicester Road, KB	17	21	13	14	12	20	9	10	20	15	11	17	179	15	14	10	28	21.9	100
Main Road, CK	19	23	15	12	11	16	10	11	21	15	14	17	184	15	14	11	29	22.6	100
Dalby Road II	22	33	22	16	14	14	17	17	24	17	20	21	237	20	18	12	38	29	100
Leicester Street	24	33	21	16	A	21	17	16	30	19	19	21	237	22	13	13	41	31.7	92
	ppb																		

Appendix A2: QA/QC Data

Quality Assurance/Quality Control for Diffusion Tubes

- The laboratory supplying and analysing the tubes is ESG (Environmental Scientifics Group (formally Bureau Veritas)).
- Since January 2009, Bureau Veritas has used 20% (triethanolamine) TEA in water preparation method to fit in with the DEFRA harmonised methods.
- There has not been a co-location study.
- The bias adjustment factor being applied to the annual means from the diffusion tubes is 0.77. This came from the Review and Assessment website <http://www.uwe.ac.uk/aqm/review/R&Asupport/diffusiontube310310.xls>
- ESG had good results of laboratory precision and the z scores of < 1 for the WASP scheme analysis, equates to category 1 (good).

Discussion of Choice of Factor to Use

There was no local bias adjustment factor available so the national figure was used.

Appendix B:

Below is the link and table of Environment Agency Permits within 10km of Melton Mowbray

<http://www2.environment-agency.gov.uk/epr/search.asp?id=EP5&&type=register>

Your Local Office: EAST AREA OFFICE
TRENTSIDE OFFICE, SCARRINGTON ROAD, WEST BRIDGFORD, NG2 5FA
TEL: 08708506506

Name:	Address:	Select detail:
Belmont Farms Ltd.	Stygate Farm, Stygate Farm,	<input type="checkbox"/>
Chandler	Shoby Poultry, Lodge Farm,	<input type="checkbox"/>
Mars Petcare UK Ltd	Petfood Manufacturer Melton Mowbray, Not reported,	<input type="checkbox"/>
Mars UK Ltd	Petfood Manufacturer Melton Mowbray, Not reported,	<input type="checkbox"/>
Mars UK Ltd	Petfood Manufacturer Melton Mowbray, Not reported,	<input type="checkbox"/>
Masterfoods Limited	Petfood Manufacturer Melton Mowbray, Not reported,	<input type="checkbox"/>
PD & H Wallis	Green Hill Farm, Green Hill Farm,	<input type="checkbox"/>
Saint-Gobain Pipelines plc	Welby Tip, Holwell Works,	<input type="checkbox"/>
Saint-Gobain Pipelines plc	Welby Tip, Holwell Works,	<input type="checkbox"/>
Star Energy Oil & Gas Ltd	Long Clawson Oilfield, Long Clawson Oilfield,	<input type="checkbox"/>
Belvoir Estates (Trust)	Barn Lodge Farm, Barn Lodge Farm,	<input type="checkbox"/>
GG & P Parker & Sons	GG & P Parker & Sons, Hose Lodge Farm,	<input type="checkbox"/>
GG & P Parker & Sons	GG & P Parker & Sons, Hose Lodge Farm,	<input type="checkbox"/>